

# RAINWATER GUIDE FOR WINDOW



# CONTENTS

NEED FOR RAINWATER GUIDE  
.....3

PRESENT RAINWATER  
GUIDE.....4

ISSUES DUE TO  
RAINWATER.....5

SHORTCOMINGS OF PREVIOUS  
RAINWATER GUIDE.....6

ADVANTAGES OF PRESENT  
RAINWATER GUIDE.....7

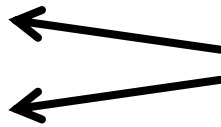
MARKETABILITY.....8

# NEED FOR RAINWATER GUIDE

## New building



## Over time



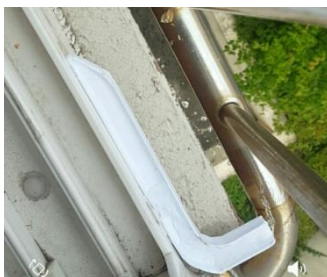
## Expensive maintenance



# PRESENT RAINWATER GUIDE

## Linear type

The linear type rainwater guide may be secured to the window frame. This guide may look like an integrated portion of the frame.



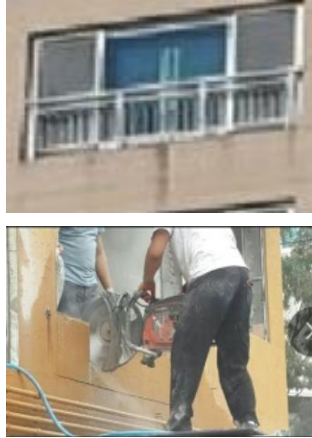
## L type

The L type may be may be secured to the window frame. This type may allow a spacing between a rainwater drop position and the wall face to more reduce a pollution of the wall face.



# ISSUES DUE TO RAINWATER

The rainwater may flow through the veranda outlet together with the dust on the veranda. This dust may pollute the wall face. This may increase a maintenance cost of the building.



It may be difficult to clean a window frame groove.

A dust contained in the rainwater may deposit in the groove.



Thus, the rainwater guide from the window frame may be needed to guide the dust flow from the frame to the outside thereof.

# SHORTCOMINGS OF PREVIOUS RAINWATER GUIDE

The previous guide is secured not to the window frame but to the wall face in a fixed manner. Thus, the guide should be installed before a building construction.



The previous guide is bulky to disallow a neat appearance thereof.

The previous guide has an installation difficulty which, thus, requires an expert, which leads to an expensive installation cost.



The previous guide may not be added to the existing window frame. Further, the guide may be free of a flow control channel and thus the rainwater may flow along and on the wall face to cause a pollution.

The previous guide may have a replacement difficulty when necessary. For replacement, the wall should be deformed. This deformation may cause a rainwater to leak into the building.

The previous guide is made of an iron which may be corrosive. Thus, the pollution may be added.

# ADVANTAGES OF PRESENT RAINWATER GUIDE

## **Reduction of maintenance cost of building**

Improvement of a period of cleaning of building wall to 3 to 5 years

## **Improvement of life span of building**

Creation of anti-aging effect of building

## **Raising building price**

Clean and neat appearance of wall face leads to increase in building price

## **Eco-friendly effect**

It may dispense with use of chemical paint, leading to being eco-friendly

## **Simple installation**

Attachment type result in simple installation; long use after single attachment

## **Inexpensive**

Use of inexpensive rainwater guide is more economical than wall cleaning

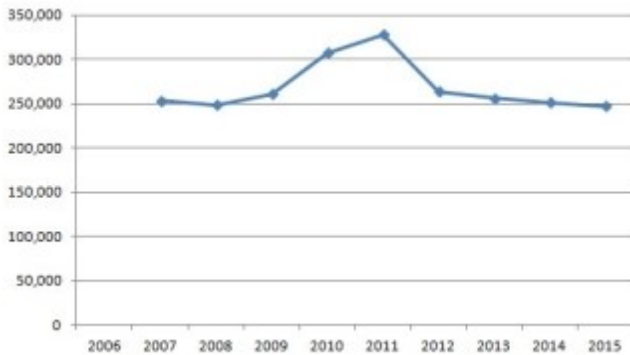
## **Easy cleaning**

Rainwater guide is easily cleaned and dust therein is easily removed therefrom

# MARKETABILITY



“domestic window market scale ”  
About 3.6 trillion won



“domestic house-holds”  
21 millions



Increase in one-person house-hold

3 to 5 window frames per one house-hold; consumption of 3 to 5 rainwater guides per one window frame

For example, 3 window frames per one house-hold leads; consumption of 3 rainwater guides per one window frame; thus, one house-hold consumes total 9 rainwater guides

For example, when 20 % of domestic total house-holds of about 20 millions, namely, about 4 millions consume present rainwater guides (one guide costs about one thousand won), total sales may be as follows:

9,000 Won X 4,000,000 house-holds = 36,000,000,000 Won  
(except for non-house hold building, for example, business building)





Company name : Goldgate Corporation

Location : 55-7, Namnyeong-ro, Jeju-si, Jeju-do, Korea

TEL : 064) 900-1971 FAX : 064) 900-1970